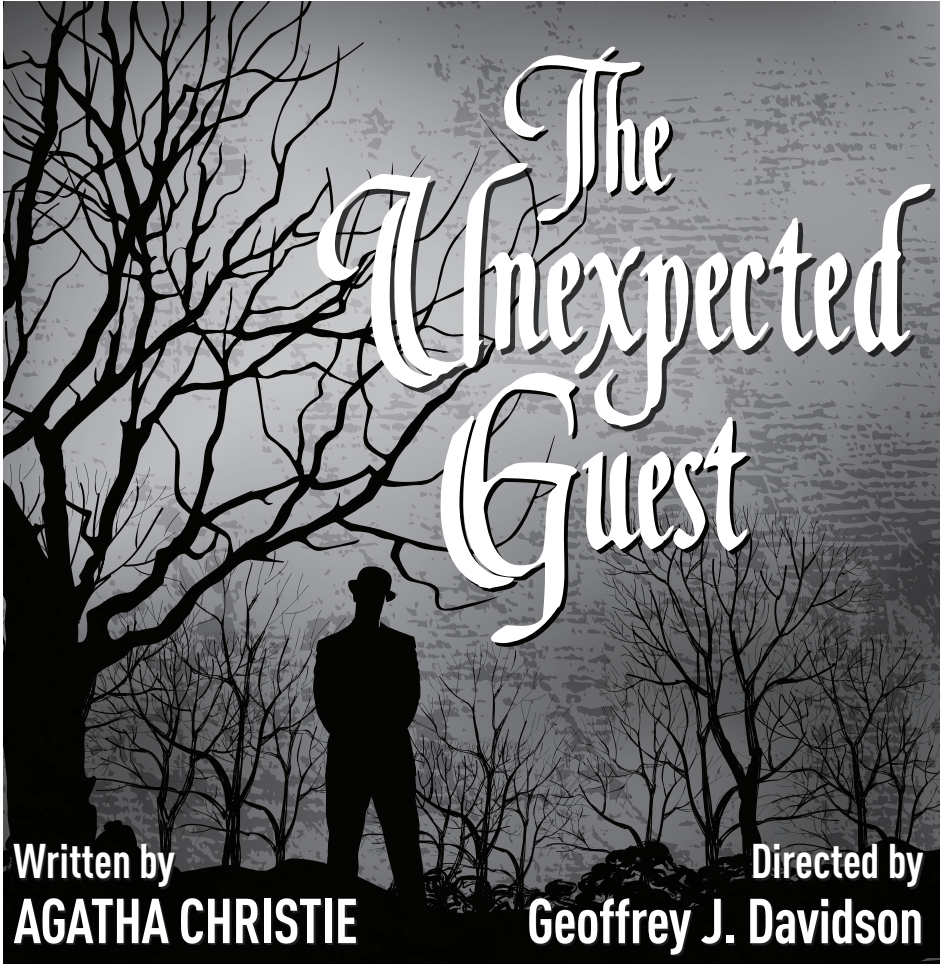




ST. LUKE'S PLAYERS

COMMUNITY THEATRE SINCE 1948!

Presents



Written by
AGATHA CHRISTIE

Directed by
Geoffrey J. Davidson

Evenings 7:30
Mar 9–12 & 16–19

Matinees 2:00
Mar 12 & 13 19 & 20

Thank you for helping us
to comply with all
COVID safety protocols
by distancing, wearing a
mask and providing proof
of vaccine status.

St. Luke's Players Community Theatre presents

The Unexpected Guest

A murder mystery by Agatha Christie

Directed by Geoffrey J. Davidson

The Unexpected Guest was presented by Peter Saunders
at the Duchess Theatre, London on 12th August, 1958

The Unexpected Guest is presented by arrangement with
Concord Theatricals on behalf of Samuel French, Inc.
www.concordtheatricals.com

TIME AND SETTING

The play takes place in Richard Warwick's study
in South Wales near the Bristol Channel

ACT 1 Scene 1 Richard Warwick's Study

11:30pm in November

Scene 2 The following morning

about 11:00am

10 Minute Intermission

ACT 2 Scene 1 Late afternoon the same day

THE DIRECTOR



Geoff is thrilled to be back at St. Luke's Players Community Theatre directing another play. It's been much too long! Past shows for SLPCT include *Nightmare*, *Play It Again*, *Sam*, *On Golden Pond*—which also starred Geli, our Assistant Director—*Whodunnit?*, *Opening Night*, and *Sherlock Holmes and the Spinsters of Blackmead*.

As this show was set to open 2 years ago, Geoff would like to thank his dedicated Cast and Production Crew who have persevered during these unforeseen times!

~ Geoffrey J. Davidson.

DIRECTOR'S NOTES

Hello and welcome (back) to St. Luke's Players Community Theatre, and welcome to *The Unexpected Guest*, by Agatha Christie.

A world of passion, cunning, intrigue, secrets, lies, ulterior motives, and a lonely foghorn. We are in the home of Richard Warwick, a misanthropic former big game hunter exiled to Wales. He spends his days drinking, being unbearable to his wife, enjoying the cruelty he bestows on his younger, sweet stepbrother, and shooting at the local wildlife through the window in his room. Everyone has had quite enough of Richard!

Yet could any of his disgruntled family kill him? Starkwedder thinks he knows, after he discovers Richard's body and meets Richard's family. As he uncovers the truth, what's to become of those who cross his path?

A classic murder mystery that will keep you guessing and, by the end, questioning the wages of sin.

I'd like to take this moment to thank you for joining us. It's a pleasure and a privilege to entertain you with our show. The first of many more. Thank you for making Theatre great again!

DRAMATIS PERSONAE

Richard Warwick	Sandra Allen
Laura Warwick	Shannon Woods
Michael Starkwedder	Andrew Shepherd
Miss Bennett.	Deb Taylor
Jan Warwick	Jesse Setka
Mrs. Warwick	Jennifer Bayne
Henry Angell.	Bill Tolson
Sergeant Cadwallader.	Stephen Lewis
Inspector Thomas.	Scott Harlow
Julian Farrar	Mitch Barnes

RICHARD WARWICK – Sandra Allen



I'm so very excited to be back once more here at St. Luke's Players Community Theatre. I've been involved with theatre for many years in different roles both on stage and backstage. I recently relocated from Winnipeg and I'm so happy to have found a new theatre home here at SLPCT. As I've always said no role is too big nor too unimportant in bringing together a play. I must say that acting as a live prop (The Dead Man) was fun.

Laura Warwick – Shannon Woods



Theatre has been a huge part of my life for as long as I can remember. Working with St. Luke's Players Community Theatre and all the talented cast and crew has been an amazing experience. Thank you to all my friends and family who have supported me through it all!

Michael Starkwelder – Andrew Shepherd



Andrew is thrilled to emerge from his pandemic slumber to find himself once again on the stage. Previous St Luke's Players Community Theatre roles include Billy in *Play On!* And Dr. Mayberry in *I Never Sang For My Father*. He would like to thank our guests, expected and unexpected alike, for their continued support.

Miss Bennett – Deb Taylor



I'm happy to be treading the boards once again with this wonderful cast and crew. Most recent shows with St. Luke's Players Community Theatre have been *Play On* and *Sherlock Holmes and the Spinsters of Blackmead*.

Thanks to friends and family for their support and enduring my various accents.

Hope you enjoy the show.

Jan Warwick – Jesse Setka



Jesse is thrilled to be playing Jan Warwick in *The Unexpected Guest*. A graduate of the Canadian College of the Performing Arts, previous credits include Walter Anderson in *Chess*, Ben in the made for Zoom play *Shift* and Ensemble in the Pacific Opera Victoria production of *A Look and a Touch*. Jesse also spent 3 seasons working as a historical interpreter in Barkerville. He hopes you enjoy the show!

Mrs. Warwick – Jennifer Bayne



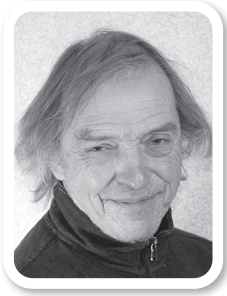
Jennifer thoroughly enjoyed playing the homicidal Badger in an adapted version of *Wind in the Willows* with St. Luke's Players Community Theatre. She was also lucky enough to play the lead role of Julie Marvis in Deep Cove Stage Society's production of *Fitzgerald's Porcelain and Pink*, and has continued performing lead roles with ACT II STUDIO and Alumnae Theatre in Toronto via zoom. She loves playing Mrs. Warwick and hopes you enjoy getting to know her as well!

HENRY ANGELL – Bill Tolson



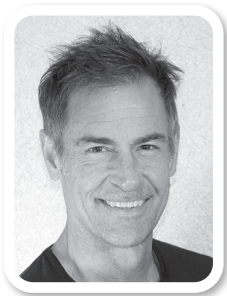
This is my fifth production with St. Luke's Players Community Theatre; it feels good to be acting again, offering audiences live performances. The cast and crew are eager to entertain you with this mystery thriller. No spoilers! I'm hoping for more acting opportunities soon.

SERGEANT CADWALLADER – J. Stephen Lewis



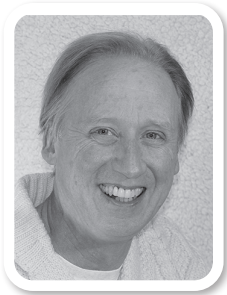
With a great sigh of relief I am overjoyed to say, 'We're ba-ack'. I am certain that the rest of the cast and crew feel the same and I hope you do too. After 2 years I am appearing as Sergeant Cadwallader in my second show with St. Luke's Players Community Theatre. Enjoy a live show!

INSPECTOR THOMAS – Scott Harlow



Scott Harlow began his acting career a few short years ago. His experience has been working in television, film, and tv commercials. *The Unexpected Guest* is his first venture into the theatre world. Scott has thoroughly enjoyed working with the amazing cast and crew.

JULIAN FARRAR – Mitch Barnes



Isn't it great to see live theatre again !?
Mitch is happy to be in his 15th play with St. Luke's Players Community Theatre where he has been seen in shows like *Duets*, *Arsenic & Old Lace*, and *Play It Again, Sam*. Thanks to Geoff, the entire talented cast and crew, and my lovely Jo.

PRODUCTION TEAM

<i>Director:</i>	Geoffrey J. Davidson
<i>Assistant Director:</i>	Geli Bartlett
<i>Producer:</i>	Deb Taylor
<i>Stage Manager:</i>	Bronwyn Taylor
<i>Assistant Stage Manager:</i> ...	Susan Nicholl
<i>Set Concept:</i>	Geoffrey J. Davidson
<i>Set Design:</i>	Simon Skey
<i>Set Décor & Painting:</i>	Sally Crickman
<i>Head Painter & Properties:</i> ..	Ann Harris
<i>Properties Assistant:</i>	Geli Bartlett
<i>Set Painting:</i>	Julie Gray, Ann Harris, Elsie Lambton, Debra Taylor
<i>Lighting Design:</i>	Max Terpstra
<i>Lighting Assistant:</i>	Carol Anne Moore
<i>Sound Design:</i>	Geoffrey J. Davidson, Guy Blais
<i>Lighting & Sound Operators:</i>	Niko Batinovic, Diane Keating, Guy Blais, Trish Tonkin
<i>Costume Design:</i>	Susan Ellis
<i>Lead Carpenter:</i>	Dave Hitchcock
<i>Building Crew:</i>	Gordon Alexander, Paul Hawkes- Frost, Dave Hitchcock, Don Lambton, Roger Purdue, Jon Scheer, Simon Skey
<i>Program Design:</i>	Saltchuck Studios (Beverly van Druten-Blais)
<i>Front of House Manager:</i> ...	Mike Chadwick
<i>SLPCT Liaison & Publicity:</i> ..	Janine Longy

Geli Bartlett – *Assistant Director*



Having gained respect for Geoffrey's directing abilities during SLPCT's 2011 production of *On Golden Pond*, Geli is delighted to advance her directing apprenticeship as his assistant on *The Unexpected Guest*. She's discovering the wide range of skills necessary to interpret a script and help convey its meaning to the audience. Thank you for this opportunity.



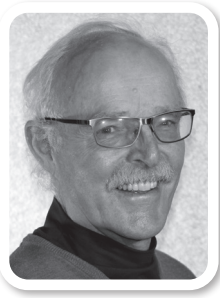
Deb Taylor
Producer



Bronwyn Taylor
Stage Manager



Susan Nicholl
Assistant Stage Manager



Simon Skey
Set Design



Sally Crickman
Set Décor & Painting



Ann Harris
Properties & Set Painting

PRODUCTION TEAM CONT'D.



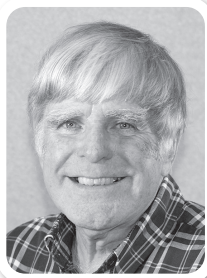
Max TERPSTRA
Lighting Design



Guy BLAIS
Sound Design



Susan ELLIS
Costume Design



Dave HITCHCOCK
Lead Carpenter



**BEVERLY van
DRUTEN-BLAIS**
*Graphic Design &
Photography*



Janine LONGY
*Exec. Liaison
& Publicity*





Some of the awesome crew preparing to transform the set.

ST. LUKE'S PLAYERS COMMUNITY THEATRE EXECUTIVE BOARD

President..... Bronwyn Taylor
 Vice-President... Janine Longy
 Secretary..... Susan Nicholl
 Treasurer..... Mike Chadwick

Members at large:

Mitch Barnes, Colleen Davies
 Vicki Etchells, Heather Lee
 Beverly van Druten-Blais

GRATEFUL ACKNOWLEDGMENTS

Broadview United Thrift Store, Vinnie Chadwick, John Crickman

We at St. Luke's Players Community Theatre would like to respectfully acknowledge that we work, create and perform on the traditional territories of the Lekwungen Peoples, also known as the Songhees and Esquimalt Nations.



ST. LUKE'S PLAYERS

The third show of
our 2021/22 Season

*Burdened by 10 million dollars and carrying a one-eyed teddy bear,
Mrs. Savage is indeed a curious lady.*

The Curious Savage



Written by John Patrick

Directed by Janine Longy

Mrs. Savage has been left ten million dollars by her husband and wants to make the best use of it, in spite of her grownup stepchildren's efforts to get their hands on it. Knowing that the widow's wealth is now in negotiable securities, and seeing they cannot get hold of the fortune, the stepchildren commit her to a sanatorium hoping to "bring her to her senses."

Evenings 7:30

May 18–21 and 25–28

Matinees 2:00

May 21 & 22 and 28 & 29

Tickets \$16.00 via Eventbrite only

**All performances are held at St Luke's Hall, 3821 Cedar Hill X Rd • Like us on Facebook
Website: www.stlukesplayers.org • Phone: 250-884-5484 • Email: stlukesplayers@yahoo.ca**

*"Curious Savage" is presented by arrangement with Concord Theatricals
on behalf of Samuel French, Inc. www.concordtheatricals.com*