



ST. LUKE'S PLAYERS

COMMUNITY THEATRE SINCE 1948!

67th Season. No. 3

February 2016

Executive 2015-16

President: Bronwyn Taylor
Past President: Rosalind Coleman
Vice President: Jane Guy
Secretary: Susan Nicholl
Treasurer: Mike Chadwick
Members at Large:
..... Paul Hawkes-Frost
..... Janine Longy
..... Natalie Munro
..... Neville Owen
..... Beverly van Druuten-Blais

St Luke's Players'
Newsletter is published quarterly

Editor: Jane Guy
Assisted by: Natalie Munro

Direct inquiries or correspondence
for the Newsletter to the Editor

E-mail: jane-guy@shaw.ca

Memberships & Season Tickets
Bronwyn Taylor
Susan Nicholl

Website
Beverly van Druuten-Blais

For information about
St. Luke's Players go to:
www.stlukesplayers.org

President's Message

Bronwyn Taylor

Dear Members:

Patrons said *Mother Goose* was the best panto ever! Despite being Sold Out, audience numbers were down slightly. Was it due to the Cold & 'Flu season? Should we stop advertising 'Sold Out' but let the public know a limited number of tickets will be available at the door? No one was turned away from buying at the door due to no-shows.

With two shows under our belt using Ticket Rocket as our only outlet, we are gradually ironing out some of the wrinkles. The change came about because two of our usual outlets were not willing to sell Panto tickets due to significant disruptions to their businesses at a crucial time for them. When we agreed to use Ticket Rocket, it was locally owned and operated. This changed over the summer. New staff, new computer programmes, new policies etc. resulted in many issues that were not part of the original 'deal'. The Executive will investigate options as to where we go from here with (on-line) ticketing for next season.

The Players provided musical entertainment at the church's pub night at the end of January. Heather Lee sang, assisted by Steve Eastman's singing debut for a few numbers, accompanied by Connie te Kemp. The variety of musical show tunes was well received and I can't begin to guess how Heather can hold a note so long!

Production Updates:

Cliffhanger: At the auditions there was a good turn out, especially the number of men covering a variety of ages - thanks to Janine's publicity team for wide advertising. Two are returning members, 2 are returnees several years later, and 1 is new to our stage. *Cliffhanger* rehearsals are progressing excellently, with a few extras to make up for when the church needs the hall.

Bull in a China Shop: We had a huge turnout of talented women at the auditions which made the director's choice difficult, but very few for male roles. Any suggestions as to how we can encourage men of all ages to audition for our productions? Where to advertise auditions? The director secured extra dates to compensate for when church functions over-rode our times/dates, and these rehearsals will start the latter part of February. The usual potluck 'Meet & Greet and Read-Through' which includes cast, production crew and Executive Committee members usually precedes the first rehearsal, but will likely be in early March once all key production crew and Executive members are back from their travels.

Respectfully submitted,
Bronwyn



CLIFFHANGER

comedy/thriller

By James Yaffee

Directed by Penelope Harwood

March 9, 10, 11, 12, 16, 17, 18 and 19 at 7:30 p.m.

Matinees: March 12, 13, 19 and 20 at 2 p.m.

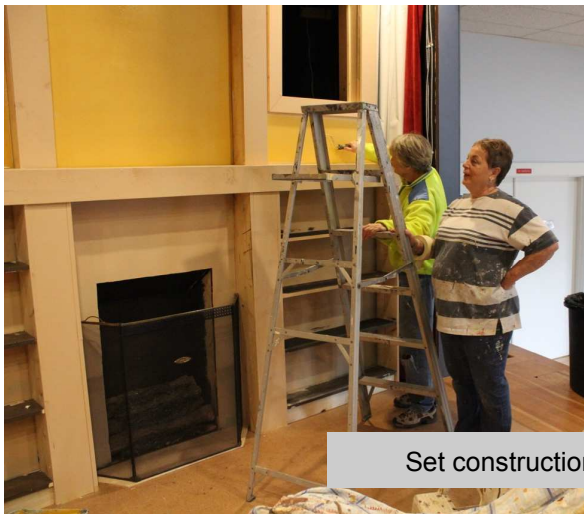


Professor Henry Lowenthal and his wife, Polly are looking forward to Henry assuming the exalted Voorhees Chair, after many years of teaching and leading the philosophy department at Copeland University. Henry is a life-long student of Socrates and has always believed in doing the right thing, both ethically and morally. So it is a profound shock when he finds himself compromised on this position, arguing with Edith Wiltshire, a much younger woman who has taken over the department and is changing its focus completely. Edith tells Henry he is not going to get the Voorhees chair, and Henry loses his whole life's philosophy with one blow.

What follows is a slightly farcical plot, involving a seen-it-all policeman, Lt. Dave DeVito and a rich self-involved slightly manic university student, Melvin McMullen. The older characters are committed to ethical behavior and the greater good while the younger ones seek opportunism and self-gratification.

Which side wins and how it is played out tests the character of both Henry and Polly and a surprising denouement brings a real twist to the climax of this questioning and entertaining play.

Penelope Harwood, Director



Set construction is well in hand



Rehearsals are going well for the cast of five - - **Randy Parker, Wendy Cornock, Natalie Muinro, Jordan Bell and Bill Tolson**. It's great to see Randy and Jordan back on St. Luke's stage after several years and to welcome newcomer Bill. **Penelope Harwood** is Director with **Kathy Macovichuk** as Stage Manager.

VOLUNTEERS NEEDED
for Front of House and concession.
Contact stlukesplayers@yahoo.ca or
call Susan at 250 721 2528.

Refer to St. Luke's Players' website for more information on upcoming plays and to look at photos of your favourite productions from the past.

www.stlukesplayers.org

Mother Goose

From the Stage Manager's Desk:

What a difference a year can make! Last year we hardly had any children at the auditions for the panto and this year there were so many we had enough for two casts. Directors, Merry Hallsor and Dave Hitchcock started planning in the spring of 2015 with a brainstorming session of ways to attract would-be actors to audition. Posters were printed and ads ran in the *Times Colonist* and other papers. An army of volunteers were at opening day of summer camps to hand out posters. Efforts paid off and a very talented and dedicated cast was selected.

Choreography and singing rehearsals started in mid October under the guidance of Musical Director Jenny Raine in space rented from the Church of the Cross kitty-corner to St Luke's. Although this space was not "like being at home" it served the purpose well and gave us a head start until *Opening Night* finished the run.

Dave and Merry were very accommodating of planned cast absences because of school Christmas activities and exams but the unplanned colds and other winter ailments meant that there were many rehearsals with cast members missing. A week or so before the first live performance, the Dame totally lost his voice and whatever bug caused that started to work its way through the cast and crew. For several rehearsals the actor was on stage but someone was reading their part from the table at the front of the auditorium. Kudos to other cast members for being able to find their cues when one person was reading three or four parts.

The costume ladies did an outstanding job with the characters looking as if they had just escaped from the pages of a nursery rhyme book. Making the costumes is only one part of the costume department; at least one or two attended every performance and many rehearsals to help dress the actors and make any last minute repairs or adjustments. Similarly, the props people attended every performance.

Susan Nicholl



Our Members Around Town

Elizabeth Brimacombe performed in *Stepping Out* at Langham Court Theatre, January 13th – January 30th.
www.langhamtheatre.ca

Didi Tipping will be performing in *Female Transport* at Langham Court Theatre, March 2nd – March 19th.
www.langhamtheatre.ca

Merry Hallsor and **Zelda Dean** will be performing in a staged reading (with a full orchestra) of *Fiddler on the Roof*, produced by Bema Productions, at the synagogue on Blanchard Street, March 6th at 2:30pm. The performance is a fundraiser to support Congregation Emanu-El in bringing a Syrian refugee family to Victoria.
www.facebook.com/bemaproductionsvic/

Helen Bunyan, the current president of Monterey Players Drama Club, is working with directors **Neville Owen** and **Frank McGilley** on two shows: the romantic comedy *Yesterday*, and the melodrama *Temptation Sordid or Virtue Rewarded*. Both shows will run from mid-April to the end of May at the Monterey Centre, as well as at various community centres and care homes in the Greater Victoria Area.

Tickets for all our shows are available from *Ticket Rocket*

- By phone at 250 590 6291
- On-line at www.ticketrocket.co/event/season/12
- In person at the Ticket Rocket Box Office at 2 - 1609 Blanshard Street (at Fisgard) Mon - Fri 10 a.m to 5 p.m.

Tickets: \$16

Tickets also available at the door on show night

Did we miss you?

Please contact Jane Guy at jane-guy@shaw.ca to update us on news of members around town.

Winners of tickets to Langham's *Female Transport* from March 3 - 19 are
Kaylee Norn & Donna Ruppel

CALL FOR DIRECTORS FOR OUR 2016-17 SEASON

St. Luke's Players is happy to announce it's 2016-2017 season. If you are interested in directing one of the plays, please submit a current Theatrical Resume along with your directorial ideas for the play(s) you are interested in directing. Applications should be forwarded via e-mail to phawkesfrost@gmail.com.

We are also accepting applications for Producers and Stage Managers.

A limited number of scripts are available. If you have any questions or would like to borrow scripts, contact: Paul Hawkes-Frost at 250-479-7802 or phawkes-frost@gmail.com.

Deadline for submission is March 1st.

The decision will be made by early April.

A Murder is Announced by Leslie Darbon (1972) adapted from a story by Agatha Christie (1950) is a two act murder mystery published by Samuel French. Performances are Wednesday - Sunday October 12 to 23, 2016 – 12 performances.

Aladdin by Dave and Helena Hitchcock (last performed in 2006 updated in 2015) of St Luke's Players is a two act traditional panto. Performance dates are December 16, 2016 to January 2, 2017 – 13 performances.

Duets by Peter Quilter 2010 is a romantic comedy published by Samuel French. There are four, one-act plays each with one male and one female character. Please specify how many of the acts will be performed. Performances are Wednesday – Sunday March 8 to 19, 2017 - 12 performances.

The Robin Hood Caper by Fred Carmichael 1962 is a three act comedy (building to farce in the last act) published by Samuel French. Performances are Wednesday – Sunday May 17 to 28, 2017 - 12 performances

Details of the synopses, cast composition, etc. may be found at www.stlukesplayers.org.

