



**At Amica, our residents get to
keep their most prized possession:
their independence.**

We understand that moving from a long-time family home can be a heart-wrenching experience, at any age. Yet when our new residents settle in and see how much they have gained in the way of comfort, friendship, services and amenities of a luxurious resort, they begin to realize that the most important aspect of their move is that they kept their dignity, self-respect and freedom of choice. All things considered, it's what you can't put a price on that we value most.

100618

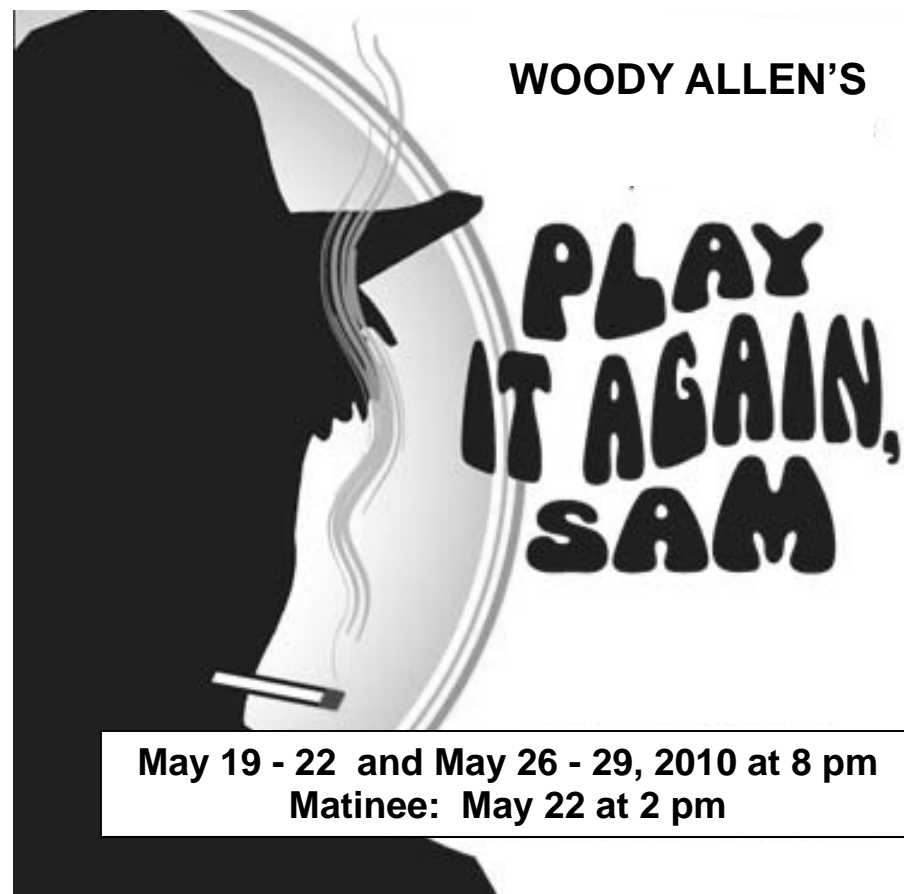
Amica at Douglas House
A Wellness & Vitality™ Residence
50 Douglas Street
Victoria, BC V8V 2N8
250.383.6258 • www.amica.ca

**AMICA**
at Douglas House



St. Luke's Players

proudly presents



WOODY ALLEN'S

**PLAY
IT AGAIN,
SAM**

**May 19 - 22 and May 26 - 29, 2010 at 8 pm
Matinee: May 22 at 2 pm**

DIRECTED BY GEOFFREY J. DAVIDSON

St Luke's Hall - Cedar Hill X Rd at Cedar Hill Rd

Synopsis:

Shy film critic, Allan Felix, has trouble with women. He is consumed by movies, particularly his favourite film of all time, *Casablanca*, and has just been through a messy divorce. Unable to deal with this emotional turmoil, Allan seeks solace in the movies he loves, imagining Humphrey Bogart has dropped by his apartment to offer him advice on dealing with the ladies. Helping him meet new women are his good friends Dick and Linda Christie. They fix him up with a succession of dates. Are they successful in their quest to help Allan overcome his nervousness and insecurity with women and find his true love?

Produced by special arrangement with Samuel French, Inc.

Setting: The apartment of Allan Felix on West 10th Street, New York in 1969.

Act I: Scene 1: A late summer afternoon
Scene 2: Later that night

15 Minute Intermission – during which drinks and snacks will be available at our Concession.

Act II: Several weeks later

Act III: The following morning

Kindly turn off cell phones and pagers during the performance

If you do not wish to keep your program, please return it to Front of House for re-use and recycle. Thank you.



2010-2011 SEASON

Arsenic and Old Lace

A comedy–mystery by Joseph Kesselring

October 13 to 24, 2010

Robinson Crusoe

A panto by John Morley

Dec 26, 2010 to Jan 2, 2011

Sinners

A comedy by Norm Foster

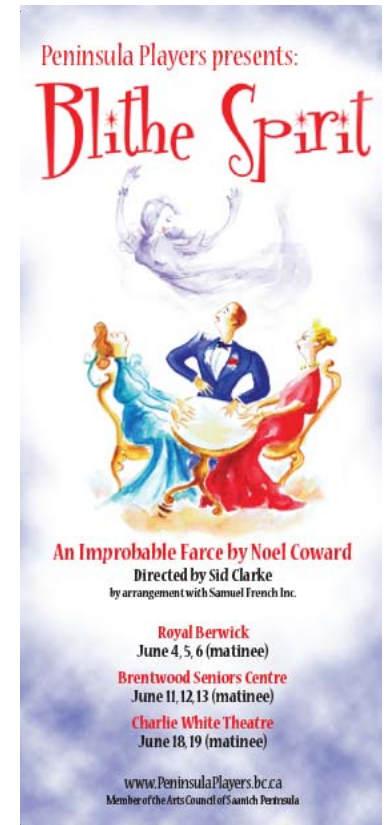
March 16 to 27, 2011

On Golden Pond

A drama by Ernest Thompson

May 25 to June 5, 2011

NEW NEXT SEASON SUNDAY MATINEES



Humphrey Bogart

An iconic actor from the “Golden Age” of Hollywood, he is known mostly for his gangster roles. His big break came when he starred in *The Maltese Falcon* as a tough, hardboiled detective, which put him in the hands of an untried director by the name of John Huston. If *The Maltese Falcon* made him a household name, then *Casablanca* made him a star, as well as establishing him as a romantic leading man (and how can you not love a man who hates Nazis?). It is these two movies that Allen’s ideas of Bogart come from.

Geoffrey J. Davidson

For information on St. Luke’s Players, go to www.stlukesplayers.org
Website maintained by Steve Sturgess

PRODUCTION CREW

Assistant Director	Gerald Schieven
Producers	Wendy Cornock & Bronwyn Taylor
Stage Manager	Andrea Pite
Set Design	Tony Gilsenan
Set Décor	Jean de Cartier
Asst. Set Décor	Joanna Hau Yu
Set Construction & Painting	Tony Gilsenan, Graham Thomson, Neville Owen, Dave Hitchcock, Ian Grant, Don Lambton, Cher Owen, Kim Furey, Jean de Cartier, Elsie Lambton, Perry Burton, Lori Smith, Elaine Lewis
Props	Maria Escude
Lighting Design	David Fenger
Lighting	Max Terpstra
Sound	Curtis Yamaoka
Costumes	Lori Smith
Hair	Erin Canning
Asst. Hair	Joanna Hau Yu
Poster & Program Design	Jane Guy
Photos & Lobby Display	Sharon Sutherland
Publicity	Joanne Frappell & Dave Hitchcock
Tickets	Neville Owen
House Manager	Geli Bartlett
Concession Coordinator	Geli Bartlett

Ladies and Gentlemen of the Concession and Front of House

St. Luke's Players would like to thank:

The Reverend Canon Peter Parker and Bonnie Watkins of St. Luke's Anglican Church, Amica at Douglas House, Petals Plus Florist, Ivy's Book Shop, Russell Books, Victoria Theatre Guild (Langham Court), Philomena Hanson, Oak Bay Pharmacy, seira adams, Where Victoria, Capital Arts Festival, Community Arts Council of Greater Victoria, Quadra Cedar Hill Community Association, Monday Magazine, Times Colonist, News Group, Shaw Cable, CBC, CFX 1070, A Channel.

CAST (in order of appearance)

Allan Felix	Mitch Barnes
Nancy	Victoria Reid
Bogey	Perry Burton
Dick Christie	Ryan May
Linda Christie	Elizabeth Brimacombe
Sharon	Alexandria Turner
Sharon Lake	Tamara Malczewska
Gina	Deb Taylor
Vanessa	Jo Barnes
Go-Go Girl	Alexandria Turner
Intellectual Girl	Deb Taylor
Barbara	Jo Barnes

Director's Notes:

Relationships ... A simple concept with a myriad of inherent complexities. This is especially true in the case of love. The films we have grown up watching give a simplistic version of this. The handsome leading man meets the beautiful leading lady and after several misunderstandings (some comical, some not) they fall in love and live happily ever after. Perhaps, this is one of the reasons for Allan's trouble with the ladies. He is looking for the perfect Hollywood happy ending in a world that is not so neat and tidy. As he travels his journey of love with the help of Humphrey Bogart, and his friends, Dick and Linda, he learns that life is certainly not like the movies, but it has an excitement and truth all it's own. We hope you enjoy watching this production as much as we did in bringing it to you.

Geoffrey J. Davidson

If you are interested in Season Tickets for next year please contact:
stlukesplayers@yahoo.ca or phone 250 884-5484

Forms are also available in the lobby during today's performance

A Season Ticket entitles you to reduced ticket prices for
FOUR productions and reserved seating (except the panto).

**Geoffrey J. Davidson (Director)**

This is Geoff's second production with St. Luke's Players. After the fun experience of directing last season's *Nightmare*, he has decided to return. He can occasionally be seen on stage, most notably as a regular cast member in the Victoria Shakespeare Festival.

**Victoria Reid (Nancy)**

After an 11 year hiatus from acting to become a wife, mother of two and an elementary educator, Victoria is thrilled to be back onstage. She last appeared as Anna in *And Miss Reardon Drinks A Little* for which she won the South Island Zone Festival Award for Best Actress.

**Mitch Barnes (Allan Felix)**

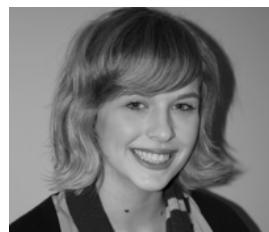
Mitch is delighted to perform again with St. Luke's Players, having previously appeared in *The Chalk Garden*, *The Heiress*, and other productions. Thanks to Geoff for the chance to be neurotic on stage and special thanks to Jo who has given me 28 years of magic.

**Deb Taylor (Gina, Intellectual Girl)**

Deb entered the wonderful make believe world of theatre only 7 years ago. This incredible world is filled with wonderful people and great exciting opportunities. This production is no exception! She's proud to be working with such a talented director and cast. Enjoy the show.

**Elizabeth Brimacombe (Linda Christie)**

Elizabeth grew up in northern Ontario where community theatre stages offered reprieve from swatting black flies. As Linda, she extends her St. Luke's stage experience beyond the wonderful, wacky world of Christmas Panto. She's delighted to share and stir the neurotic energy of this show!

**Alexandria Turner (Sharon, Go-Go Girl)**

Currently visiting from England, previous Victoria roles include Riley in *Tin Solider* (Four Seasons). In England, roles included: Mrs Lovett (*Sweeney Todd*), Eponine (*Les Miserables*), Narrator (*Joseph*), Maggie (*Dancing at Lughnasa*). Alex was fortunate to co-direct Spectrum School's annual musical *Once upon a Mattress*.

**Ryan May (Dick Christie)**

Ryan is pleased to be performing with St. Luke's Players again, following his acting debut in our last production *Deathtrap*. Off stage, you'll usually find him far from anything resembling Wall Street. In the garden or on the trail, he often has quite dirty hands and a huge green grin on his face!

**Jo Barnes (Vanessa, Barbara)**

Delighted to share the stage again with husband Mitch, Jo has discarded her cuckoo flutters (Four Seasons Theatre) & traded them for sensuous moves! Jo has been involved with many theatre groups including Langham Court, Victoria G & S, VSS, Peninsula Players, Mountain Dream, Masques.

**Perry Burton (Bogey)**

Perry likes hot women and cold beer... oops... wrong bio. Too "Bogey"? This is my first production with St. Luke's Players and I am impressed with what can be done in such a small space. I hope you are too.

**Tamara Malczewska (Sharon Lake)**

Tamara is enjoying her fourth production with St. Luke's Players. Previously, she has worked with Four Seasons Musical Theatre, Xempt Theatre, and White Rock Players. Most recently on-stage, Tamara played the role of 'Jack' in the SLP panto, *Jack and the Beanstalk*.