



# ST. LUKE'S PLAYERS

COMMUNITY THEATRE SINCE 1948!

65 SEASON, NO. 2

NOVEMBER 2013

## EXECUTIVE 2013-14

### President

Rosalind Coleman

### Vice President

Dave Hitchcock

### Secretary

Susan Nicholl

### Treasurer

Mike Chadwick

### Members at Large

Elaine Lewis

Bronwyn Taylor

Kathy Macovichuk

St Luke's Players' Newsletter is published quarterly

**Editor:** Kathy Macovichuk

**Assisted by:** Elaine Lewis

Direct inquiries or correspondence for the newsletter to the Editor at [kmacovichuk@hotmail.com](mailto:kmacovichuk@hotmail.com)

### Memberships & Season Tickets

Bronwyn Taylor

### Website

Max Terpstra

For information about St. Luke's Players go to: [www.stlukesplayers.org](http://www.stlukesplayers.org)

Like us on Facebook at [www.Facebook.com/stlukesplayers](http://www.Facebook.com/stlukesplayers)

**Phone: 250-884-5484**

(Only answered in the four weeks prior to the opening of each show.)

**Email:** [stlukesplayers@yahoo.ca](mailto:stlukesplayers@yahoo.ca)



## President's Message

What a spectacular autumn! Bright sunshine for days on end and then two weeks of fantastic, grey fog which shrouded everything. Now in the first days of November, as the nights get cooler, thoughts turn to Christmas with warm fires and sparkling lights.

St. Luke's Players has enjoyed a great autumn, too! **Who Dunit?** the first play of our season, drew big audiences and was one of our most popular shows. It also received a hugely positive review, noting that "St. Luke's Players offer a truly unique and Victorian (as in the city, not

the era) experience." The reviewer was "thoroughly charmed by the tea cups at intermission, the beautifully painted canvas flats, the dedicated, old hat audience members, and, of course, the camp-tastic glory of *Who Dunit?*" Everyone agrees it was a hit!

Looking ahead, we are hard at work rehearsing **Puss in Boots**, our panto, for the Christmas season. Dave Hitchcock is back at the helm as the Director this year working closely with his wife, Helena. Shiny costumes are being made. Intricate sets are being designed. Our box office is preparing for the usual rush as **Puss in Boots** tickets are now on sale. The panto is always popular so plan to get your tickets early.

And there is MORE entertainment planned this season. St Luke's Players will get top billing at the St Luke's Pub night on November 15th in the church auditorium. To give you a little "taste" of the panto, we will be performing one of the songs from **Puss in Boots**. As a bonus, members of the Executive will be putting on short Christmas excerpts in a reader's theatre format during the evening. Everyone is welcome. So bring yourself and bring a friend.

Let me invite you to come down to St Luke's Players sometime this fall. Please come and audition or be part of our production crew or just to enjoy the show. Wishing you all a happy, holiday season,

**Rosalind Coleman**

President of St Luke's Players



**Who Dunit?** (Oct. 2013) • **Puss in Boots** (Dec. 2013) • **Welfarewell** (Mar. 2014) • **Prepare to Meet Thy Tomb** (May 2014)

# It's Panto time again.

Oh, no it's not! Oh, yes it is!!

Submitted by Dave Hitchcock, Director

Preparations are well underway for St Luke's Players' eighth Christmas panto. This year it is "Puss in Boots". The talented cast of 21 actors started the rehearsal process in late October by learning their catchy musical numbers, which include "What's New Pussycat?", "These Boots Are Made For Walking" and "How Much Is That Pussy In The Window?". The production crew is hard at work too, with the many jobs that enhance the actors' performance on stage, including colourful costumes, exciting scenery, sound, lighting, props and publicity.

Like all pantos, "Puss in Boots" is loosely based on the well-known children's story. In this production Jack, the miller's son, has been left with just the family cat in his father's will. With the arrival of Aunt Hettie from View Royal and the revelation that Puss can talk

(and look pretty fetching in a pair of boots!), Jack, Auntie and Puss become embroiled in a complex scheme to persuade the King and Queen that Jack (masquerading as the Marquis of Carabas) is suitable husband material for the beautiful Princess. But they will have to contend with a jealous noble suitor, a pair of dastardly henchmen, a dragon and a hideous shape-shifting ogre!

St Luke's Players production of "Puss in Boots" will follow the traditional British format with plenty of action, comedy and audience participation – fun for the whole family!



Great food was available at the cast and crew "Meet and Greet" event.

There will be 13 performances this year (six afternoon matinees and seven evening shows), starting on December 19 and running until January 1.

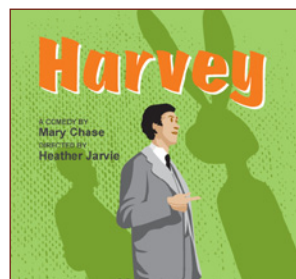
**Tickets are now on sale at the usual ticket outlets.** If previous years are anything to go by, they will likely be sold out early in December, so you are encouraged to buy yours early to avoid being disappointed.



Helena and Dave Hitchcock chat before the read-through.



A read-through of the play gave a glimpse as to how the panto will unfold.

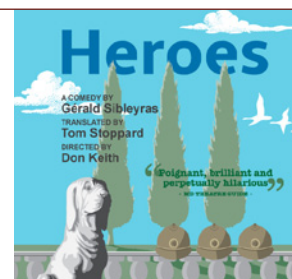


Congratulations to the winners of complimentary tickets to the Langham Court Theatre's production of *Harvey*.

**Gary Johnson and Tom Holder**

Congratulations to the winners of complimentary tickets to the Langham Court Theatre's production of *Heroes*.

**Susan Nicholl and Elizabeth Brimacombe**





# St. Luke's Pub Night

Friday, November 15  
6:30 to 9:30 pm

Come and enjoy beer and wine (at a reasonable cost), soft drinks, snacks, games, and music.

Please call St. Luke's Office at 250-477-6741 to let us know how many will be in your party so that we have some idea of numbers.

There will be a Songs from the Panto performance by the St. Luke's Players, as well as a reader's theatre skit.

Hope to see you  
November 15.

## Remember!

**Tickets for the Puss in Boots panto are now on sale.**

Get yours before they're gone!



## "Who Dunit?" – We did it!

Submitted by Geoffrey J. Davidson, Director

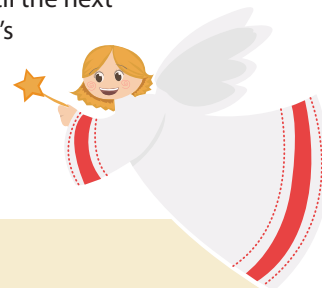
"Who Dunit?" is now over and what an adventure it has been! A big thank you to all the volunteers (or "Who Did-its") that helped to make the show a success. There were moments of nail-biting tension and plenty of laughs to be had; and that was just getting ready for opening. It was a very technically-oriented show, but the techs and backstage crew were more than up for the challenge, as well as our first-rate cast, as demonstrated by the laughs, oohs, and aahs from our wonderful audience.

We had over 1,000 attendees which makes "Who Dunit?" the second most popular show of recent memory for the

SLP (not including the pantomimes, of course). We also had one reviewer who kicked herself for not coming out to see a SLP play sooner!

A special thank you to Perry Burton, our first-time Producer, who not only rounded up a good crew, but was more than willing to lend his expertise in sound, lights, and what-have-you as the need arose.

I can't wait until the next St. Luke Player's production I will be privileged to be a part of.



### the Marble – Anne's Review (edited from the original copy)

I've always had the best intentions when it came to catching a show by the St. Luke's Players: I used to live a block away from the church; my grandmother acted in one in the '70s; and I heard rumours that the Christmas panto sold out before it even opened last year. Therefore, every time I see a poster about one of their shows I think "I need to make an effort to go see that"—and then I promptly don't get around to it. Having attended Thursday evening's production of C. B. Gilford's Who Dunit?, I am rather berating myself for missing out on so many delightful opportunities.

St. Luke's Players, now in their 65th season, offer a truly unique and Victorian (as in the city, not the era) experience. I was thoroughly charmed by the tea cups at intermission, the beautifully

painted canvas flats, the dedicated, old hat audience members, and of course the camp-tastic glory of Who Dunit?.

While early-in-the-run nerves seemed to affect a few of the performers, the cast's energy was high and the sound design hilariously corny. The set was detailed and further propagated the show's sense of humour. The script was a bit wordy and the pace could have clipped along a bit more but every actor committed completely to the delicious camp required of the show. Standouts were Wendy Cornock as the film noire dame, Elizabeth Brimacombe as the conniving floozy, Joanne Kimm as the doting maid and Steve Eastman as the perplexed archangel Michael.

I just don't know where else one gets to see theatre like this anymore. It was harmless and wholesome and silly and fun and next time I see a St. Luke's Players' poster, I will absolutely make the effort!

# Auditions, auditions, auditions!

## Welfarewell

by Cat Delaney

Director: Michael King  
Play runs March 12 - 23, 2014  
Rehearsals are on Mondays,  
Wednesdays and Fridays

### AUDITION DETAILS:

Located at St. Luke's Hall,  
Sunday, December 8 (1 - 4 pm)  
and Monday, December 9 (7 - 10 pm).  
Callbacks may be Tuesday, December 10 (7 - 10 pm).

**No appointments are necessary**, just show up at the start time.

**Welfarewell Character descriptions:** These are the basic descriptions of the main characters. Some of the actors cast in these roles will also be playing bank tellers and customers.

Esmerelda Quipp (80 years)

- Retired Actress
- Must be able to carry an English accent.
- She is refined but feisty.
- From a different era

H.B. (Honeybunch) Hackett  
(30 - 40 years)

- Police Officer
- Must be tough but tender.
- relates well to all the women and understanding to their plights.

Val (30 - 40 years)

- Actress
- a little over the top
- acts more like a T.V. prostitute than the real thing.

Penelope Farthingale (40 - 50 years)

- Prostitute
- Definitely past her prime, not sure that she knows this
- really tough and street smart

Dottie Ramsbottom (45 - 55 years)

- Chronic Shoplifter
- Her name says it all. Dottie

Alfred David (30ish)

- Lawyer
- Tired of his clients not doing what he tells them.
- Jaded and tired of the system

Jennifer Doer (25 - 35 years)

- Social Worker
- Enthusiastic. Going to make the world right one person at a time
- Naive/Do gooder

Gladys Symmington-Bukovitch  
(45 - 55 years)

- Rich woman who tried to kill her husband (he didn't die)
- believes that her money can buy anything and that she is above the rest.

Judge Julius (55 - 65 years)

- Judge
- Crusty and tough but caring
- Judge Judy type

Mildred McGonigle (60ish)

- Bank Customer
- can turn the drama on and off
- knows Shakespeare and would probably have like to be on stage

Landlord (40 - 60 years) (the person cast as the landlord will also play the chef)

- Landlord
- brash and crude
- unshaven, wearing a tank top undershirt, beer bellied



## Langham Court Theatre

### THE PENELOPIAD

by Margaret Atwood  
Director: Wendy Merk  
Play runs April 23 to May 10, 2014  
The first set of rehearsals  
(choreography) will start Sunday  
January 19, 2014

### AUDITION DETAILS:

Located at Langham Court Theatre  
Sunday, December 8 from 1:00 pm to  
4:00 pm and Monday, December 9th  
from 7:00 pm to 10:00 pm. Callbacks  
will be Tuesday, December 10th from  
7:00 pm to 10:00 pm.

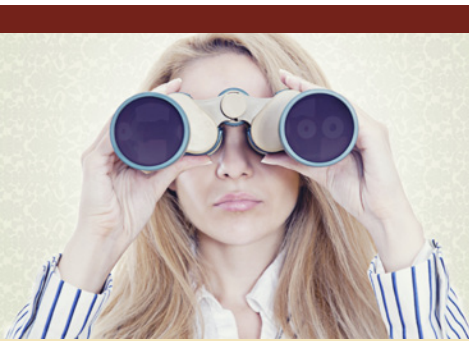
### THE GRADUATE

Adapted by Terry Johnson | Based on  
the Novel by Charles Webb and the  
Motion Picture Screenplay by Calder  
Willingham and Buck Henry  
Director: Judy Treloar  
Play runs March 5 to March 22, 2014

### AUDITION DETAILS:

Located at Langham Court Theatre  
Saturday, January 4th from 1:00 pm to  
4:00 pm and Sunday, January 5th from  
1:00 pm to 4:00 pm. Callbacks will be  
Tuesday, January 7th from 6:30 pm to  
10:30 pm.

**For more information on each of  
the auditions at Langham Court,  
please visit their site at [www.  
langhamtheatre.ca/support/  
auditions/](http://www.langhamtheatre.ca/support/auditions/)**



## What our Members are Doing Around Town

See one of newest members, **Alex Judd** playing the part of Rooster in the VOS production of *Annie*.

In Langham's next production of *Heroes*, you will also see **Tom Holder** and **Alan Omerod** as WWI heroes living in a home for retired soldiers. **Don Keith** is director and set designer, with **Carol-Anne Moore** doing lighting design.

**Jon Scheer**, **Pearl Arden** and **Jo Barnes** are all involved with Langham's production of *Cabaret*.

Congratulations to **Luke Krayenhoff** on being elected President of Langham Court Theatre. We know you'll do a great job.

## St. Luke's Players is looking for a Publicist

...to help promote our wonderful season of theatrical entertainment.

Publicity is crucial for the success of any theatre group.

**No advertising – no audience.**

More information about the duties required can be found on our website at [www.stlukesplayers.org/manual/publicity.html](http://www.stlukesplayers.org/manual/publicity.html)

If you'd like to help out, please email us at [stlukesplayers@yahoo.ca](mailto:stlukesplayers@yahoo.ca)



## An Invitation to all our Members to a General Meeting and Christmas Party

Please come to St Luke's Players General Meeting and Christmas Party in the lounge at St Luke's Church Hall on Wednesday, December 11 at 6 p.m.

We will start with a very short business meeting at which time the executive will give notice that they will propose a change to our Bylaws at the AGM in the summer and then we will have a Christmas Party where we can mingle and get to know each other a little better. St Luke's Players will provide the food but if you want to bring finger food or a dessert that will be very welcome.

### The Bylaw Change:

"To increase the number of members-at-large on the executive committee to a minimum of three and a maximum of five".

### The Reason for the Change:

St Luke's Players has evolved over the past few years and every year our audiences get bigger and more discerning. Each year the executive members decide what we can improve to give our audiences and members a better theatre experience. Recent changes include a new sound system, dimmable house lights (although we are still renting these for each performance) and the way we handle reservations for season ticket holders. Even if a project is not accepted, it takes quite a bit of research to find out if it is feasible, the expected costs, etc. This is over and above the ongoing activities, such as liaising with St Luke's Church, selecting plays for the upcoming season, finding directors, producers and stage managers, and managing the budget.

We are fortunate to have more people running for positions on the executive. Increasing the number of members-at-large will give more volunteers an opportunity to participate.