



ST. LUKE'S PLAYERS

COMMUNITY THEATRE SINCE 1948!

65 SEASON, NO. 3

FEBRUARY 2014

EXECUTIVE 2013-14

President

Rosalind Coleman

Vice President

Dave Hitchcock

Secretary

Susan Nicholl

Treasurer

Mike Chadwick

Members at Large

Elaine Lewis

Bronwyn Taylor

Kathy Macovichuk

St Luke's Players' Newsletter is published quarterly

Editor: Kathy Macovichuk

Assisted by: Elaine Lewis

Direct inquiries or correspondence for the newsletter to the Editor at kmacovichuk@hotmail.com

Memberships & Season Tickets

Bronwyn Taylor

Website

Max Terpstra

For information about St. Luke's Players go to:

www.stlukesplayers.org

Like us on Facebook at

www.Facebook.com/stlukesplayers

Phone: 250-884-5484

(Only answered in the four weeks prior to the opening of each show.)

Email: stlukesplayers@yahoo.ca



President's Message

The cold, foggy days of January are behind us. February has come at last with its promise of spring flowers and longer sunlight hours. This is the perfect time to go to the theatre.

We, at St Luke's Players, are hard at work on our next production. Opening on March 12 and running until March 23, we are pleased to bring you the poignant but funny, "**Welfarewell**", written by the Canadian playwright, Cat Delaney, and winner of the 2009 Samuel French Play Writing Competition. This is a charming, bittersweet comedy about Esmerelda Quipp, an

80-year-old pensioner, who robs a bank so she can go back to prison and enjoy free room and board. Directed by Michael King, this is a great play to kick off the new theatrical year.

I am happy to report that St Luke's Players has experienced a surge in audience numbers and membership this season. We have also welcomed a record number of season ticket holders who are so important to our sustainability.

Other exciting developments include the creation of a new Publicity Chair which Janine Longy has kindly agreed to fill. This is an important position for us because we see the Chair as being able to pull together all our publicity activities into a coherent, effective program. As part of our publicity push, we will be doing an audience survey at our "**Welfarewell**" production to find out where people heard about us and what plays they would like to see. We did this a few years ago with interesting results. It will be exciting to hear again from our audience about which direction they want us to go.



Janine Longy

Another development is the creation of a joint working group between St Luke's Players and the Church's Building and Maintenance Committee. We will be meeting on a regular basis to discuss potential investments and renovations. Stay tuned to hear about the installation of new dimmable LED lights in the Church hall and, possibly, a new sound and lighting booth!

Let me encourage you again to come to St Luke's Players and get involved – either on the stage, behind the stage, or as part of the audience. Whatever you do, it will be fun.

You can log on to our website www.stlukesplayers.org for more information.

Rosalind Coleman

President of St Luke's Players

Who Dunit? (Oct. 2013) • Puss in Boots (Dec. 2013) • Welfarewell (Mar. 2014) • Prepare to Meet Thy Tomb (May 2014)

Welfarewell is Well on its Way

Submitted by Michael King, Director

Welfarewell is a funny and all too relevant story. While having its very comic moments, the audience will not be able to ignore the underlying themes of aging, homelessness, addictions and mental health issues.

Work is well under way on Welfarewell and things are going smoothly! We had a great turnout for auditions. After a few false starts, we finally have a full cast. There are some familiar faces from the St. Luke's community and a few new faces as well.

The cast are really settling into their roles and after four weeks of rehearsals, the characters are coming to life. Penelope



The cast rehearse their jailhouse scene.

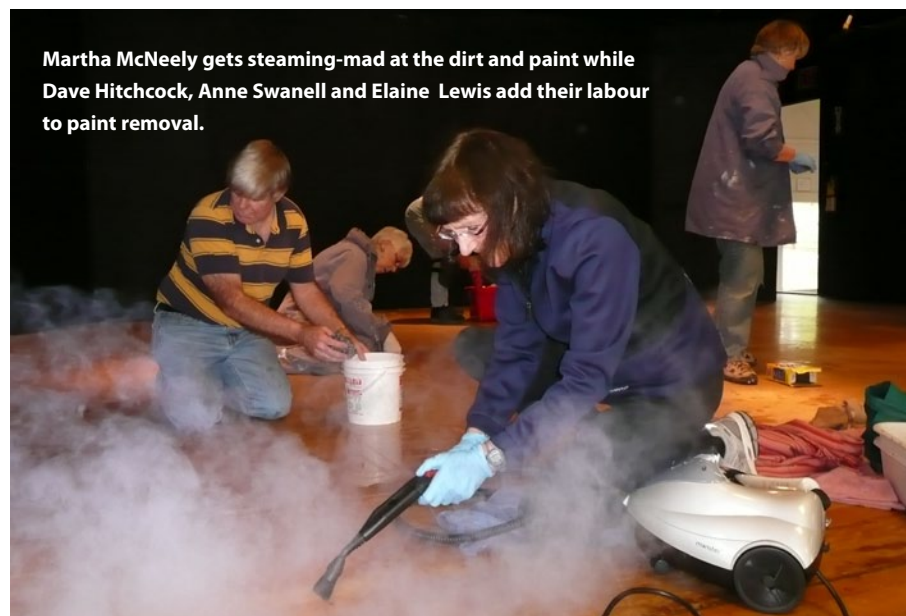


Michael King (Director) with Penelope Harwood (Stage Manager) and Leigh Robinson (ASM).

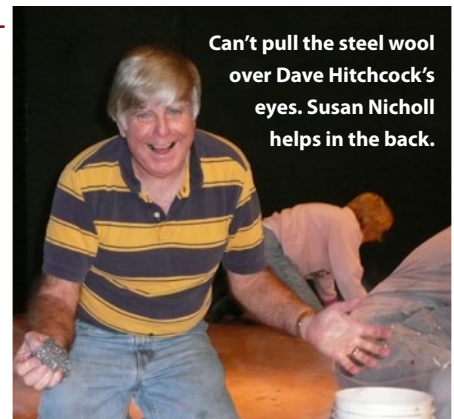
Harwood as Stage Manager is hard at work keeping everyone in line and on track including the director.

Lisa Preston, who is new to this theatre group and designed my set for Calendar Girls, has designed a wonderful set which is very different to the traditional sets we are used to at St. Luke's Players. It is very simple and modular and will be very effective in conveying what we need for the 18 scenes we have!

With such a talented cast and crew, I am looking forward to a very successful spring production!



Martha McNeely gets steaming-mad at the dirt and paint while Dave Hitchcock, Anne Swanell and Elaine Lewis add their labour to paint removal.



Can't pull the steel wool over Dave Hitchcock's eyes. Susan Nicholl helps in the back.



Ann Harris looks fetching in her pink rubber gloves, while Lisa Preston is lending a blue hand.

More Than Actors Shine on our Stage

Eleven volunteers scraped and scrubbed, on hands and knees, for four hours, with steel wool and water/steam to reveal the tile floor on the stage. They then finished up with a quick vacuum and wax. Everybody had great fun and lots of laughs.

A HUGE thank you goes out to these volunteers for their time and effort. Next time you're at St. Luke's hall, take a look at the stage floor, you just might see your reflection now.

Who Dunit? (Oct. 2013) • Puss in Boots (Dec. 2013) • Welfarewell (Mar. 2014) • Prepare to Meet Thy Tomb (May 2014)

**Tickets for Welfarewell
will be on sale
February 12.**

**They make a great
Valentine's Day gift!**



What to Know More about Welfarewell?

The director and a cast member will be giving a short talk about the show at the Nellie McClung library on **February 16 from 1:30 - 2:30**. Register online for this free event at www.gvpl.ca under Programs & Events or by contacting the library:

Nellie McClung Branch
3950 Cedar Hill Road
250-477-7111



"Puss in Boots" - was it a success?

Submitted by Dave and Helena Hitchcock, Directors

Several people have asked "was Puss in Boots a success?" This set us thinking about how we measure the success of a community theatre production, such as the St. Luke's Players' panto.

A number of criteria come to mind:

Did the audience enjoy the production? Would they come to another one?

From the applause, laughter and audience participation during the 13 sold-out performances, it appeared that most audience members enjoyed the show. This was borne out by the favourable and complimentary comments that were overheard in the intermission and as people left the hall. Some felt strongly enough to send an email, such as: "We thought the Panto today (Sunday) was fabulous...the acting, the costumes, the dancing, the singing and the set which changed, all very, very well done...plus the local references in jokes, etc. Just terrific... for adults as well as children," and "We loved the St Luke's Panto this Christmas. So nice to see the Panto tradition being kept."



Was it a good experience for the cast and crew, and would they do it again?

All of the comments we heard (and we can't speak for those we didn't!)

indicated that, despite some sickness and the usual tiredness that comes with a run such as this, everyone had a good time. Many of the cast are already asking about next year!

Did it satisfy the expectations of the directors?

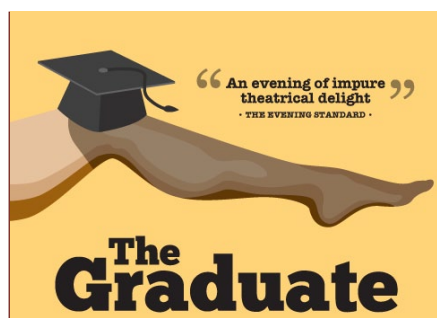
Could certain things be improved? Of course, always! Did we learn from our mistakes? Ditto! Were we pleased with the end product? Absolutely! Did the cast and crew live up to our expectations? Ditto, again!

Are there other measures of "success"? Probably, but based on the above and the fantastic effort of everyone in the cast and crew involved with "Puss in Boots", we think we checked most of the boxes.

"Oh yes, we did!"

"Oh no, you didn't."

"Oh yes, we did."



Congratulations to the winners of complimentary tickets to the Langham Court Theatre's production of *The Graduate*.

**Peter McNab and
Ina Masterton**



Children from the audience were invited to join the actors on stage to help sing one of the songs.

Auditions, auditions, auditions!

Prepare to Meet Thy Tomb

by Norman Robbins

Director: Jon Sheer

Play runs May 21 – June 1, 2014

Rehearsals are on Mondays,
Wednesdays and Fridays

AUDITION DETAILS:

Located at St. Luke's Hall,

Friday, February 28 (7 – 10 pm)

and Saturday, March 1 (1 – 4 pm)

Callbacks may be

Monday, March 3 (7 – 10 pm).

No appointments are necessary, just show up at the start time.



Prepare to Meet Thy Tomb Character descriptions:

Drusilla Tomb (teens to 20s)

- Modern girl with attitude. Keen on the family contract murder business.

Hecuba Tomb (50s to 60s)

- Oldest surviving member of the family, but only by marriage. Dowdy and a little scatterbrained.

Sir Beverly Comstock (50s to 60s)

- Aggressive businessman. Hasn't smiled since his last takeover. Asthmatic. May be cast as Dame Beverly.

Phillipa Collins (30s to 60s)

- Successful mystery novelist. Bright, self-assured. Probably the smartest person in the room.

Daphne Summers (40s to 60s)

- Companion to Phillipa. Worn down by life. Scared of her own shadow.

Anthony Strickland (20s to 30s)

- Sir Beverly's nerdy, bumbling assistant. Not who he seems to be.

Quentin Danesworth (40s to 60s)

- Television host. Extremely flamboyant. His energy sucks air out of any room.

Robert Sandbrooke (30s to 40s)

- Classic good looking hero with ego to match. Always scheming but not the brains of the operation.

Miranda Torrence (30s to 40s but older than Robert)

- Robert's wife. Television voice over personality. Everything about her is an act. Hair colour from a bottle with a body to stop traffic.

Cicely Venner (30s to 60s)

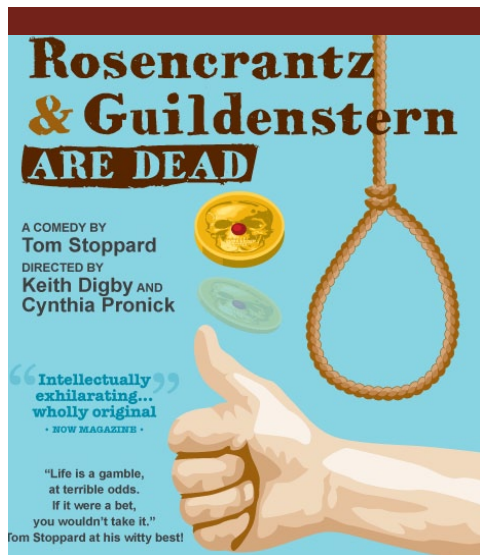
- Lawyer from what was the Tomb family's solicitors. Professional, friendly with Hecuba, but hiding secrets.

For more information about this audition, please visit our website at www.stlukesplayers.org/auditions.htm

St. Luke's Players is looking for help with our final show, Prepare to Meet Thy Tomb

Assistant Stage Manager, Set Decor, Costumes, Props, Light Designer, Light Operator, Sound Operator, and Concession/Front of House.

If you'd like to help out, please email us at stlukesplayers@yahoo.ca



Langham Court Theatre

Rosencrantz and Guildenstern are Dead

by Tom Stoppard

Directors: Keith Digby and Cynthia Pronick

Play runs June 11 to June 28, 2014

AUDITION DETAILS:

Located at Langham Court Theatre
Saturday, March 15 from 1:00 pm to 4:00 pm and Sunday, March 16 from 1:00 pm to 4:00 pm. Callbacks will be Monday, March 17 from 7:00 pm to 10:00 pm.

REQUIREMENTS: The play relies on actors who have wit, energy and, with rehearsal, the ability to speak Shakespeare's language comfortably.

NOTE: Audition pieces will be made available with the scripts at the theatre. Choose a piece that you feel you can deliver with energy and clarity, and prepare it for your audition. Memorization is not necessary, interpretation is vital.

For more information on auditions at Langham Court, please visit their site at www.langhamtheatre.ca/support/auditions/



What our Members are Doing Around Town

In Langham's production of *Cabaret*, we had a whole host of SLP members helping out: **Jon Scheer** was on an ASM, **Tom Holder** helped with Set Construction, **Sally Crickman** did Properties/Set Decor, **Pearl Arden** was Wardrobe Mistress, **Jane Krieger** and **Jean de Cartier** helped as Dressers, **Carol-Anne Moore** was Lighting Operator and Crew, and **Perry Burton** was on the Lighting Crew.

In Langham's next production of *The Graduate*, we have **Elizabeth Brimacombe**, **Alex Judd** and **Chris Harris** on stage, with **Merry Hallsor** and **Jean de Cartier** helping put the show together.

Kathy Macovichuk's been busy as she's helped with the Peninsula Player's panto production, *King Arthur and the Knights of the Roundish Table*, by designing their poster and program. She's also playing the role of Odysseus in Langham's production of *The Penelopiad* in the spring.



St Luke's Players next production "Welfarewell" opens on March 12. We are looking for volunteers to help serve drinks and treats in the concession and to help front-of-house taking tickets.

This is a fun way to get involved with The Players.

If you volunteer for two or more shifts, you and a friend will be invited to the preview performance on March 11th.

Please contact Susan Nicholl (susannicholl@shaw.ca) if you're interested in helping.

Victoria Gilbert & Sullivan Society
Presents

H.M.S. PINAFORE

Tom Mitchell
Music Director

Chris Moss
Stage Director

Linda Troke
Producer

Heather-Elayne Day
Choreographer

Mary Winspear
Centre

Fri. March 28 @ 8PM
Sat. March 29 @ 8PM
Sun. March 30 @ 2PM
Box Office 250.656.0275

McPherson Playhouse

Sat. April 5 @ 8 PM
Sun. April 6 @ 2 PM
Box Office 250.386.6121