



# ST. LUKE'S PLAYERS NEWS

COMMUNITY THEATRE SINCE 1948!

DECEMBER 2025

PRESIDENT'S MESSAGE

## 2025-26 EXECUTIVE

President..... Malcolm Harvey  
Vice President ..... Beverly van Druten-Blais  
Treasurer..... Mike Chadwick  
Secretary..... Susan Nicholl

## MEMBERS AT LARGE:

Dominick Ali  
Geoffrey Davidson  
Sheila McKenzie  
Jim Rabb  
Bronwyn Taylor

## St. Luke's Players News

Editor: Beverly van Druten-Blais  
Submissions for the Newsletter:  
[SaltchuckStudios@gmail.com](mailto:SaltchuckStudios@gmail.com)

## Memberships & Season Tickets

Bronwyn Taylor &  
Susan Nicholl

Graphic Design & Website  
Saltchuck Studios  
Beverly van Druten-Blais

For information:

[www.stlukesplayers.org](http://www.stlukesplayers.org)

[www.facebook.com/stlukesplayers.com](https://www.facebook.com/stlukesplayers.com)



By the time you get this newsletter we will be closing in on Christmas and our annual Panto. From what I hear, it sounds like a blockbuster, and tickets are going fast. This will cap

an excellent year for SLPCT. Audiences are growing to pre-Covid levels, we have new people joining us in all sorts of capacities, we have some additional speakers in the hall to improve sound levels, and we are getting a new, current, lighting board system to replace our outdated, and intimidating, current one.

One source of regret is that we were not able to organize an event to celebrate our 75 years of collaboration with St. Luke's church. We were a victim of timing. We only realized that 2025 was a significant year early in 2025 itself. That left us scrambling since we were already mid-season, and none of our materials reflected the occasion. We did make great efforts to put together an event and several of our members, notably Sheila MacKenzie and Janine Longy, put a lot of time and effort into planning

for the event, but it was not to be. We owe both of them, and several others, a vote of thanks. The combination of short notice, and its being summer time, meant that few people were able to attend on the date planned, and so we felt we had to cancel the event.

But do not despair, we have a significant anniversary in 2028! This will be the 80th anniversary of the founding of our community theatre company! Born as the Doncaster Players in 1948, we have a wonderful history of 80 seasons of community theatre to celebrate!

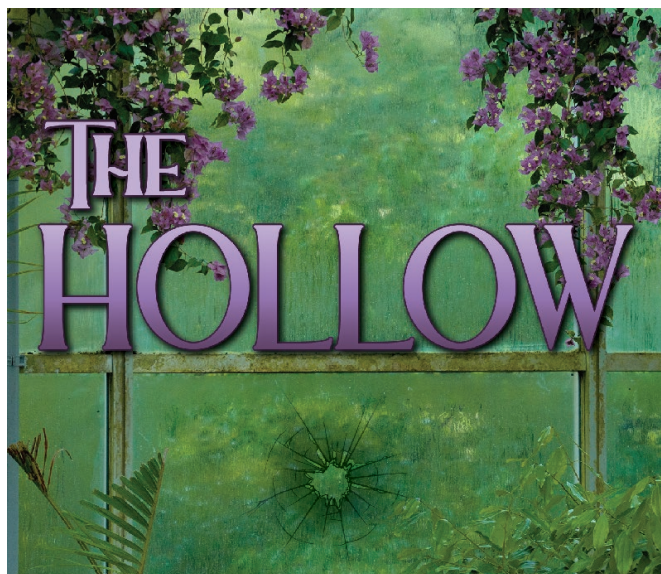
So, now it's up to you. How should we prepare to celebrate this amazing occasion? Do you have stories to tell about SLPCT? What should we do to celebrate? Do you want to be involved? Let us know. You can contact us via our email, or you could buttonhole a member of the Board when you see them. Next month it will be 2026, only two years to plan. Let's get going!

~ Many thanks,  
Malcolm Harvey

# Seasons Greetings







Oct 1–12, 2025

A classic murder mystery

Written by  
Agatha Christie

Directed by  
Jacqollyne Keath

*The Hollow* by Agatha Christie was a huge success. Many theatre goers enjoyed trying to figure out who the real murderer was. As typical for a Christie, there was a last minute twist! It was a treat working with all the cast and crew! Mitch Barnes, Meghan Sawatzky, Dominic Ali, Tess Wiens, Andrew Shepherd and Ben McFee were joined on stage by newcomers Roberto Pecchia, Kara Anderson, Madison Brightwell, Dave Baron, Kyla Mellish and Carla Girvin.

A great thank you to costumer Elodie Adams and of course to our SM Elaine Montgomery, and Producer Bronwyn Taylor. There were many others behind the scenes

who helped bring this show to life! Thank you Max Terpstra for lighting and Mitch Barnes for sound design.

Much thanks go to Dave Hitchcock and his crew of carpenters and painters. A special thank you to Deirdre Tipping for her great voiceover work in the telephone sequences.

~ Jacqollyne Keath



Evenings 7:30  
Mar 11–14 & 18–21

Matinees 2:00  
Mar 14, 15, 21, 22

Written by  
Noël Coward

Directed by  
Jon Scheer

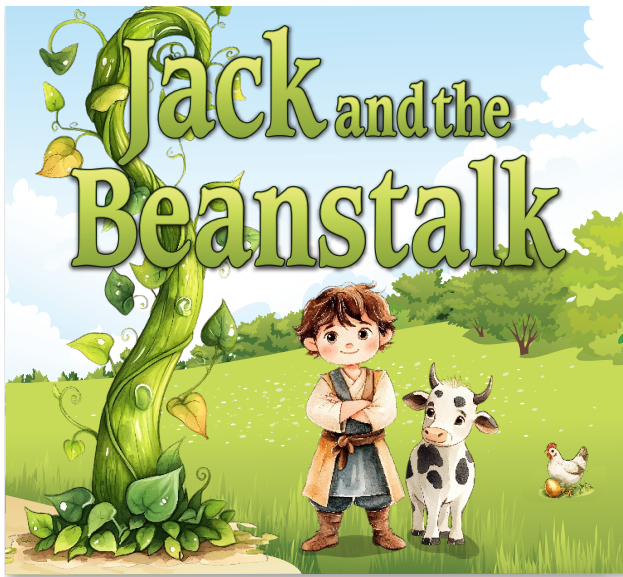
Casting this Noel Coward play was a challenge. One of his later plays having first been performed in 1960, it has a cast of 18 including 14 women, most of whom are retired after years on the stage. It took 5 days of auditions to try out various

combinations of potential performers, as most of the scenes have 8 to 10 characters on the stage at the same time with no one having many lines. I am delighted with the group that has been selected. *See below.*

~ Jon Scheer

Bonita Belgrave . . . . .De Roger  
Cora Clarke. . . . .Julie Gray  
Maud Melrose . . . . .Heather Lee  
May Davenport. . . . .Wendy Cornock  
Almina Clare . . . . .Patricia Zogare  
Estelle Craven. . . . .Muriel Ali  
Deirdre O'Malley . . . . .Beverly  
van Druten- Blais  
Perry Lascoe . . . . .TBD  
Sylvia Archibald . . . . .Roslyn Heslop

Mr. Osgood Meeker . . . . .Luke Krayenhoff  
Lotta Bainbridge. . . . .Elizabeth  
Whitmarsh  
Dora. . . . .Kathryn Theobald  
Doreen . . . . .Claire Rogers  
Sarita Myrtle . . . . .Cat Argue  
Zelda Fenwick. . . . .Elizabeth Derkacz  
Dr. Jevons. . . . .Steve Eastman  
Alan Bennet. . . . .TBD  
Topsy Baskerville . . . . .Bronwyn Taylor



**Evenings 7:00**  
**Dec 12, 17, 18, 19**

**Matinees 2:00**  
**Dec 13, 14, 20, 21, 26,**  
**27, 28, 30, 31, Jan 1**

**Panto fun  
 for everyone**

*Written by*  
**Ben Crocker**

*Directed by*  
**Karmen McNamara**

I'm thrilled to invite you to our rowdy, heartwarming pantomime, Jack and the Beanstalk. Expect fairies who rhyme on cue, a cow with star quality, a truly dreadful villain to boo, and a giant-sized dose of laughter, music and giggles—all wrapped around a story about ordinary people standing up to greedy bullies. This is theatre to join in: sing, cheer, hiss, and bring the whole family. Come and be part of the magic—our cast and crew have worked wonders, but panto isn't complete without you.

~ Karmen McNamara, Director

## Introducing Jack & The Beamstalk Cast

Edena the Eco Fairy . . . .	Kathryn Theobald	Giant/Ghost/Ensemble	Bear Spry
Slimeball . . . . .	Steve Eastman	Ensemble . . . . .	Jude Somers
Jack . . . . .	Sébastien Vincent	Ensemble . . . . .	Clara Harris
Princess Demelza. . . . .	Ksu Sinelnikova	Minstrel/Ensemble . . . .	Jim Rabb
Queen Bertram. . . . .	Shannon Demers	Minstrel/Ensemble . . . .	Glen Rodger
Trumpet/Ensemble . . . .	Brianna Gilson	Minstrel/Ensemble . . . .	Bill Tolson
Dame Trot. . . . .	Joe Scheubel	Minstrel/Ensemble . . . .	Sheila McKenzie
Simon . . . . .	Micah Wosilius	Minstrel/Ensemble . . . .	Lina Streltsov
Daisy/Ghost/Ensemble	Jennifer Beatty		

## Introducing Jack & The Beamstalk Production Team Leads

### Vincent Gornall – Stage Manager

This is the first time that Vincent has stage managed a show. During his time at UBC, he directed illustrious plays, including *The Importance of Being Earnest* and *Robert & The Captain*. Among other theatrical pursuits, Vincent inspires coulrophobia while performing as a clown named Gigggle-o, (because he giggles a lot) and enjoys transforming umbrellas into laughable weapons.



### Lina Streltsov – Music Director/Minstrel

Lina is a Ukrainian-Canadian musician and choir conductor whose career spans Ukraine, Israel, and Canada. Trained in Kyiv, she has led choirs of all ages, and taught voice. Her work includes international collaborations with renowned artists and community ensembles. In Winnipeg, her choirs performed at major community events. Now on Vancouver Island, she previously directed choirs at Pearson College, and currently leads the Ukrainian Kalyna Choir while teaching voice at Brentwood Music School.



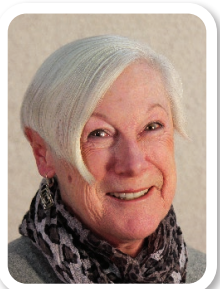
### Susan Nicholl – Co-Producer

Susan started working backstage for St Luke's Players Community Theatre (SLPCT) when she retired in 2010. She is usually at the back table calling the cues for the panto but decided to spread her wings and Co-Produce. She's been an awesome secretary for our troupe for many years.



### Bronwyn Taylor – Co-Producer/Front of House & Concession Mgr

Upon retirement in 2007, Bronwyn's sister persuaded her to get involved, and 'the rest is history' as they say. She had 2 lines in 2 scenes for 2 nights once but prefers to work behind the scenes. As such, Bronwyn has been a stage manager, producer, and even president of SLPCT. She keeps coming back, as she enjoys the people so much.





## INTRODUCING JACK & THE BEAMSTALK PRODUCTION Team Leads

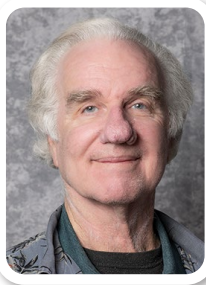
### Katie Liebault – Co-Choreographer

Katie is thrilled to make her debut as co-choreographer. She co-founded the Seaside Swing Dance Company and is a collaborative choreographer and dancer. Earlier this year she was Mrs. Spencer with Theatre Al Dente's *Anne of Green Gables*. Katie has loved working with the cast and crew and says "Go on dance, who gives a fig!"



### David Roland – Co-Choreographer

Formerly a soloist with the Berlin Ballet, Mr. Roland danced leading roles in the classics, and works by Balanchine, Béjart, Van Manen, Nureyev, and Panov. His choreographic experience spans musicals, operas, dance theatre, original ballets, and Ballet Victoria's inaugural Peter Pan, Alice in Wonderland, and Peter and the Wolf. Presently 1st Character Dancer/ Founder of Ballet Étoile Canada.



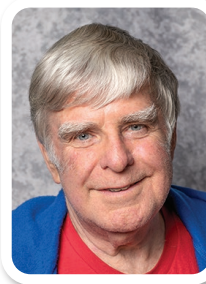
### Helena Hitchcock – Set Design

Helena loves all things panto but delights in creating the quirky sets, from the initial design and illustration, to the technical aspects of how one scene magically transforms into another. It is always fun and a wonderful community undertaking with a great team of volunteers. We invite you to come and join us!



### Dave Hitchcock – Set Construction Lead

Dave gets a lot of fun, and much satisfaction as a member of the set building team—helping to create the Designer's vision, as a backdrop for the actors, to be enjoyed by you, the audience. He has been involved with building sets at SLPCT since 2006 - including 20 pantos—where he particularly enjoys working with his Set Designer wife Helena!



## INTRODUCING JACK & THE BEAMSTALK PRODUCTION Team Leads

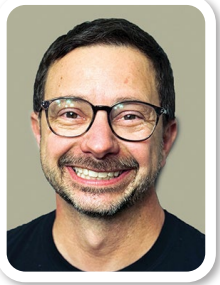
### Deirdre Tipping – Set Painting Lead

Didi has been helping to paint sets for a few years now. She finds it so much fun. This is her first time as lead painter, and she'd happily climb that beanstalk with this wonderful team of painters anytime. And she's scared of heights!



### Mike Martin – Sound Design

Mike is also a new member of our troupe. He is way busy—sorting out the sound technology, ensuring that our audiences get the best—to write a bio. So, say hi to him at the back of the auditorium at the audio table.



### Beverly van Druten-Blais – Costumes

Beverly has performed in many of SLPCT's pantos. This year, however, unable to rehearse with the gang, she was cajoled into doing the costuming. So, with the assistance of her wonderful husband Guy and friend Janet, she worked feverishly for four months to outfit the 17 cast members—many with multiple costume changes. "I'd rather be acting :)"



### Janet Grogan – Properties

Janet enjoyed designing props with the imaginative Joan Steacy, and set painting with this wonderful community of talented artisans. This panto had a number of challenges in the props department—milk carts, beanstalks, a giant—to name a few. Lots of thinking through the logistics, planning, teamwork, sewing... What fun to enjoy!





# What have we been doing?



I'm onstage in Western Edge Theatre's current production, *A Baker's Dozen*.

We are having a great run!

Hope all is well in your corner of the world.

~Elizabeth Brimacombe

After playing a reverend father in *Drinking Habits*, Eric switched gears in November



to produce and act in *A Number*, a play by Caryl Churchill in which characters ask "Who am I?" after learning they were human clones. In January, he flies off to Kerala in southern India to indulge his other passion—looking at wildlife. ~Eric Grace

I am currently helping with the set construction for this season's pantomime.



I will also be performing as one of the musicians providing live music in this year's show, *God help the audience*.

~ Bill Tolson

**James Johnson** performed in *Numbers* with Dandelion Theatre.

**Becca Elliot and Jo Barnes** are performing in *Unity 1918* at Langham Court Theatre. It is a very moving production.



During the run of our Panto, *Jack and the Beanstalk*, the actors will need help getting their costumes off and on for their different characters. Often there needs to be a quick backstage change. It would be so fine if a few of you fine folks can spare a couple of hours and come to the theatre to help Beverly on one, any, or all of the performances Dec 12-Jan1.

THE MERCURY PLAYERS PRESENT

## BURN

by John Muggleton  
directed by Julia Lalonde



"Burn is a highly suspenseful ghost story that holds you in its fiery grip right up until the final moments."  
~ Alan Mackey, *On Stage Ottawa*

Visit [www.mercuryplayers.org](http://www.mercuryplayers.org) for information and e-tickets.

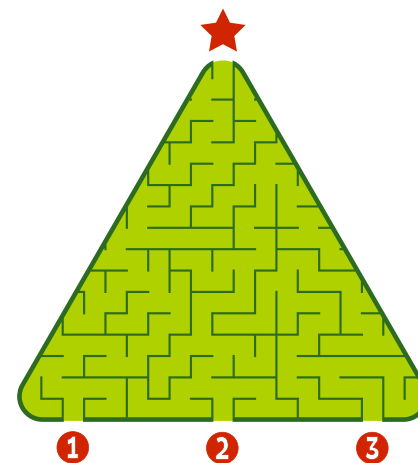


\$25 General Admission | \$20 Students & Seniors | Opening Night  
Special Nov. 21 - 2 Tickets for \$35 / Cash Ticket Sales at Ten Old Books

Evening Performances 7:30 Nov. 21, 22, 28, 29 & Dec. 4, 5  
Matinee Performances 2:30 Nov 23, 30 & Dec 7

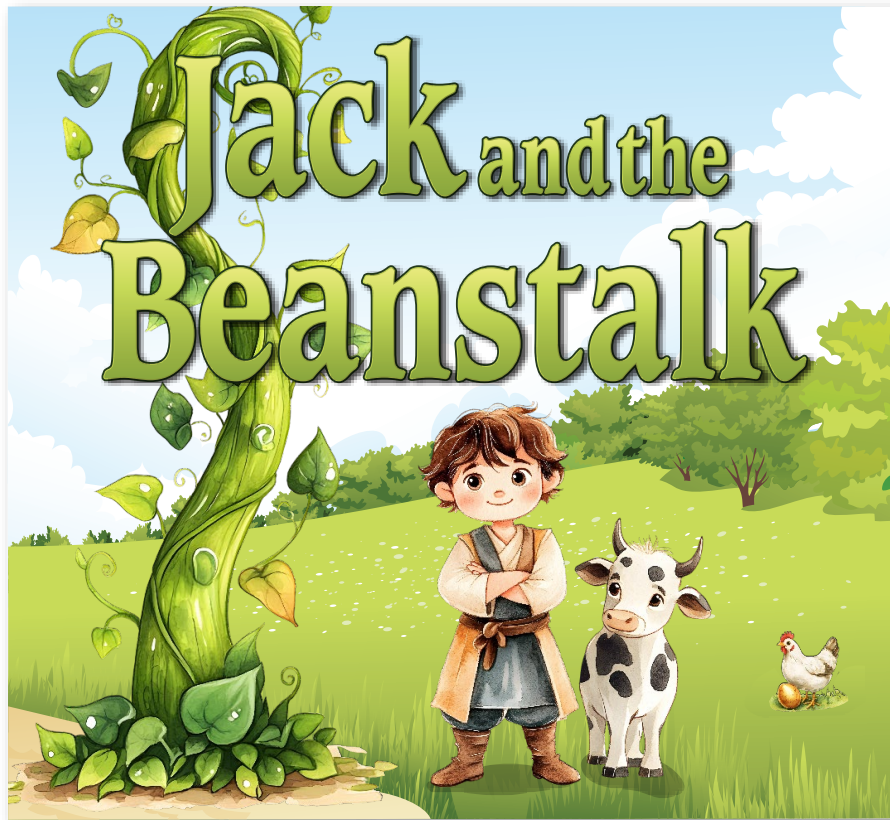
Heritage Hall at Duncan United Church  
246 Ingram Street, Duncan, BC

The Mercury Players Society gratefully acknowledges the support of the





# A FUN FOR ALL PANTO!



Written by Ben Crocker

Directed by Karmen McNamara

**Evenings 7:00**

**Dec 12, 17, 18, 19**

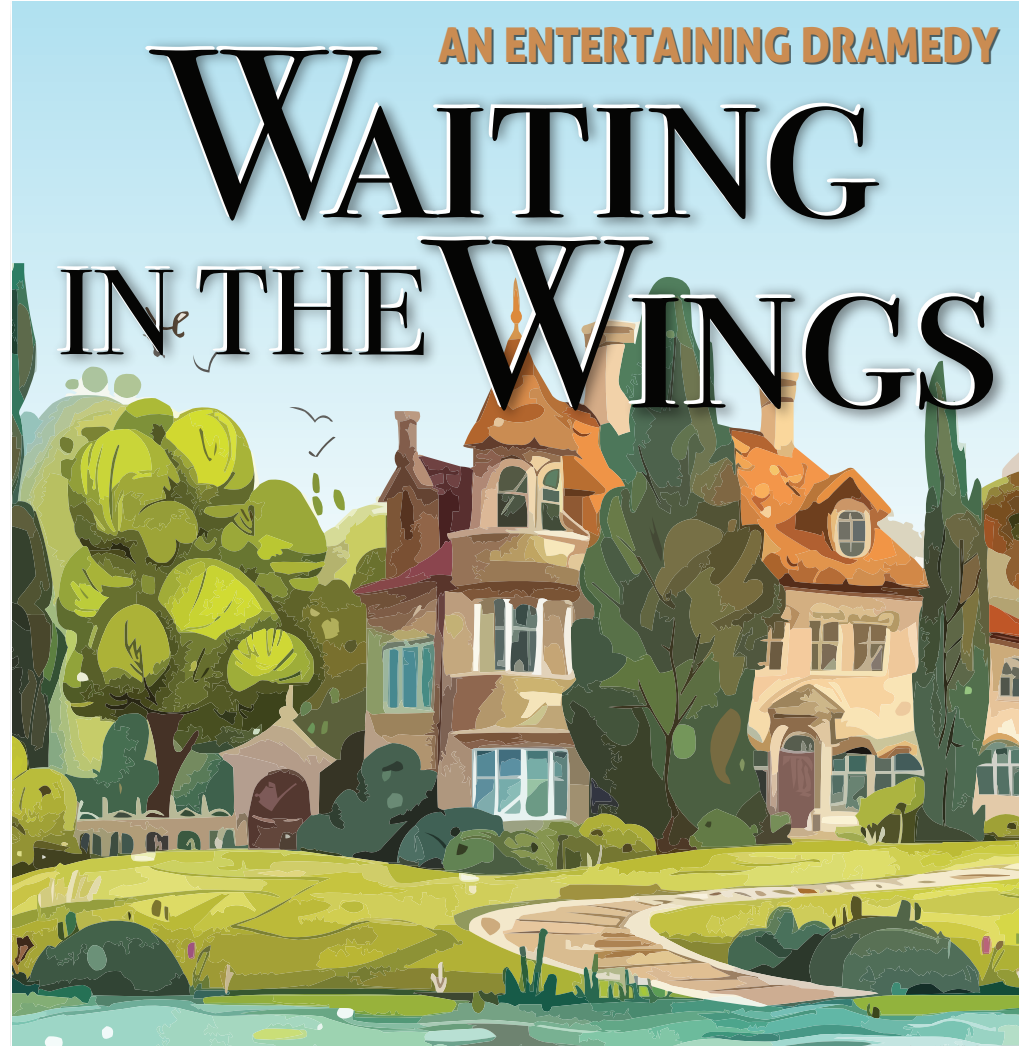
**Matinees 2:00**

**Dec 13, 14, 20, 21, 26,  
27, 28, 30, 31, Jan 1**

With lots of fun and the usual corny jokes, the original fairy story sees Jack sell Daisy the Cow for beans, which grow into a magical beanstalk up into the land of the giant. Jack is a brave principal boy who falls in love with a beautiful princess, whom he has to save from the clutches of the soul-loving giant and his nasty henchman Slimeball. Jack's mother Dame Trot, milkman Simple Simon, Edena the Eco Fairy and a great ensemble help him along.

**Tickets: \$18.00 Adults / \$10 Children ≤ 12 • Online via eventbrite, or at the door**  
**Tickets go on sale November 1st • A sell-out for most performances every year!**

*Jack and the Beanstock is presented by arrangement with Ben Crocker Pantos*



Written by Noël Coward

Directed by Jon Scheer

**Evenings 7:30**

**Mar 11–14 & 18–21**

**Matinees 2:00**

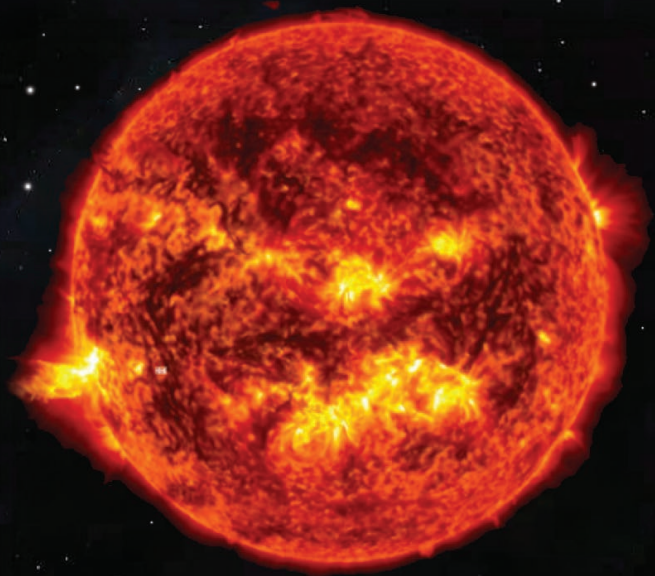
**Mar 14, 15, 21, 22**

'The Wings' is a charity home for retired actresses in straitened circumstances who have been stars in their day. Here these aged ladies grow older ungracefully amidst squabbles, jealousies and grandiose memories. On a June afternoon a once great actress arrives, sparking off a feud involving the entire home. It is only resolved when one deranged lady sets fire to her room.

*Waiting in the Wings is presented by arrangement with Samuel French Ltd.*



NEWCOMBE  
SINGERS



## SUNRISE MASS by Ola Gjeilo

Music of hope and wonder for the longest night of the year

**Dec 13 & 14**  
★ **3:30pm** ★

Sunrise String Ensemble,  
Simon MacDonald, Concertmaster  
Raya Cheng & Adam Dyjach, Soloists

Kathryn Whitney  
*Music Director*

Kristina Stevens  
*Assistant Director*

Robert Jan Dukarm  
*piano*

St. Mary's Anglican Church ★ 1701 Elgin Road Victoria, BC V8R 5L5

VICTORIA  
**G&S**  
*Society*

## presents VICTORIAN CHRISTMAS CAROLS



**Sat Nov 29 2:30pm**

• St. Mary's Anglican Church  
1973 Cultra Ave. Saanichton

**Sun Dec 7 2:30pm**

• St. Mary the Virgin Anglican Church  
1701 Elgin Rd. Victoria

Tickets \$20, Children ≤12 Free via Eventbrite, from VGSS members or at the door

